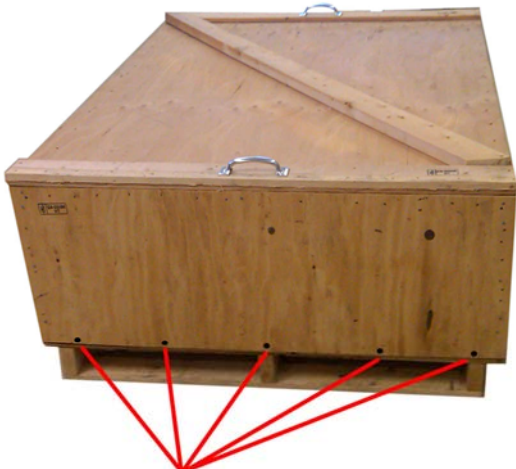
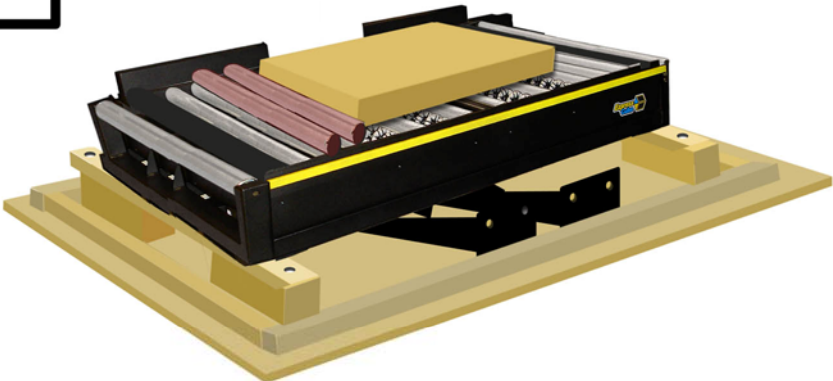


# 480R Installation Guide

**1**

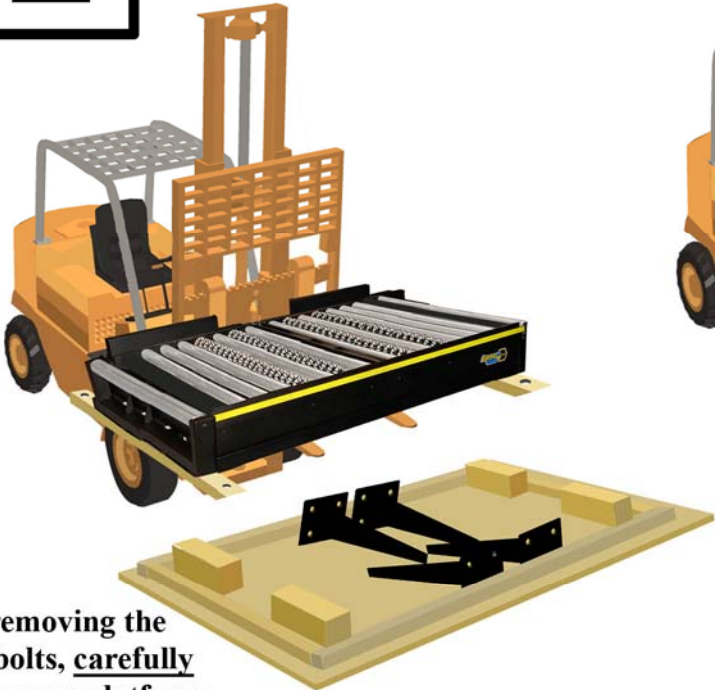


Phillips screws removed from around base



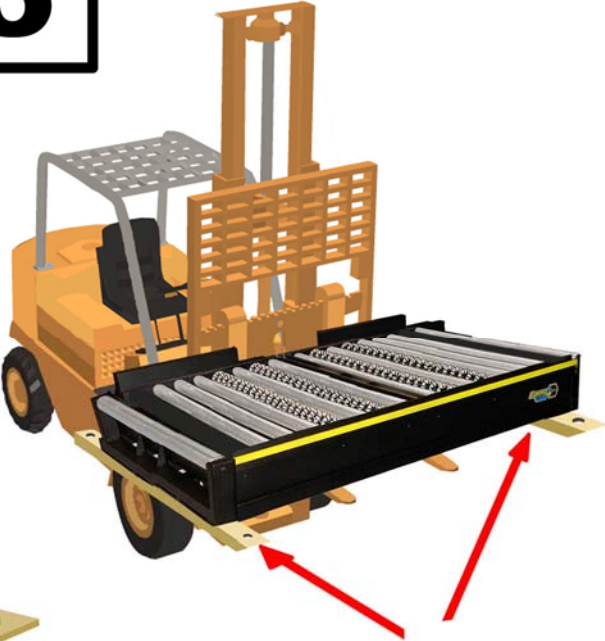
Remove parts that are strapped to roller bed

**2**



After removing the 4 Lag bolts, carefully lift conveyor platform straight up using fork lift - keep safe level

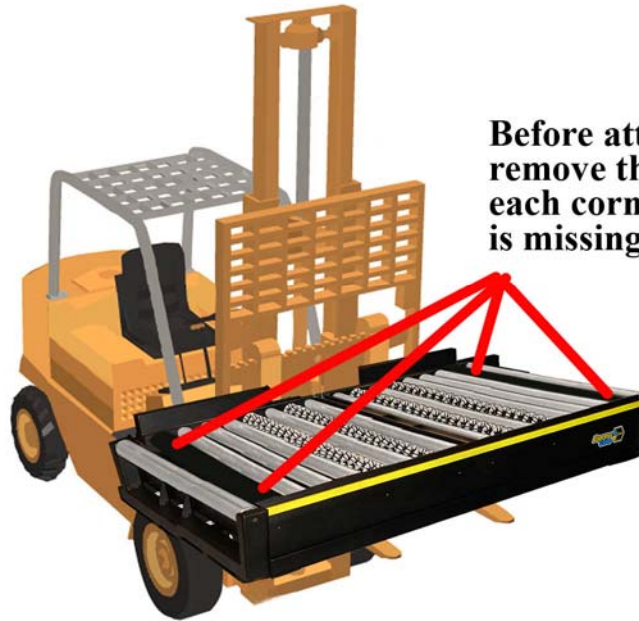
**3**



While still on fork lift, remove wood supports from beneath platform (keep washers & nuts to mount the legs)

**4**

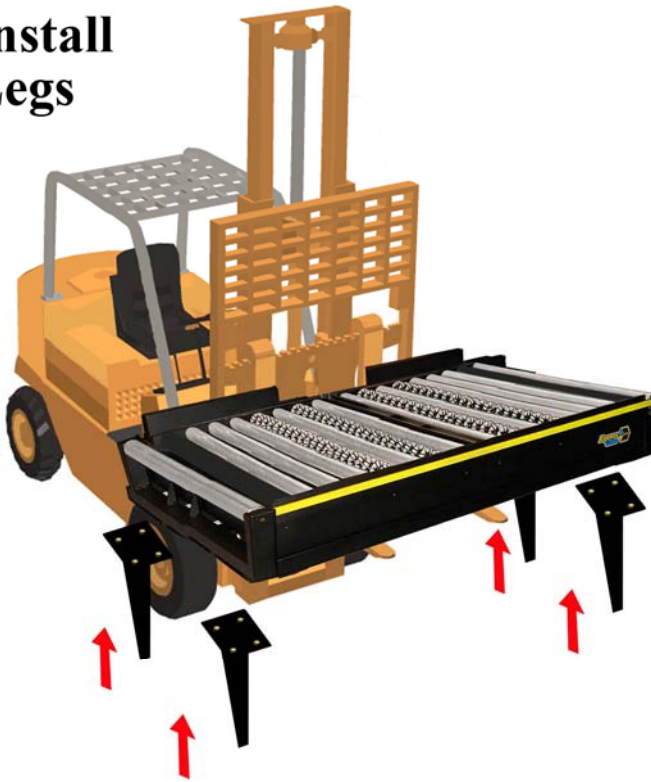
## Remove Lock Bolts



Before attaching legs, remove the Lock bolt from each corner where roller is missing.

**5**

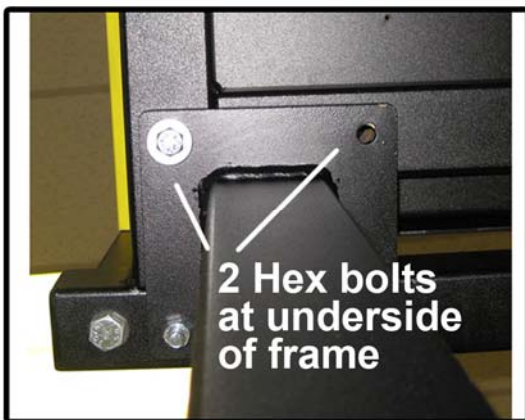
## Install Legs



2 Carriage leg bolts on outer rail



Outside leg bolts mount from top  
- 2 Carriage bolts per leg



2 Hex bolts at underside of frame

Inside leg bolts mount from beneath  
- 2 Hex bolts per leg





# 6

## Install Vertical Section

\*Remove 2 small socket screws on back panel to access vertical cavity

8 Install screws



\*Vertical aligning screws already installed & set at factory - **Do Not Adjust**



Lower

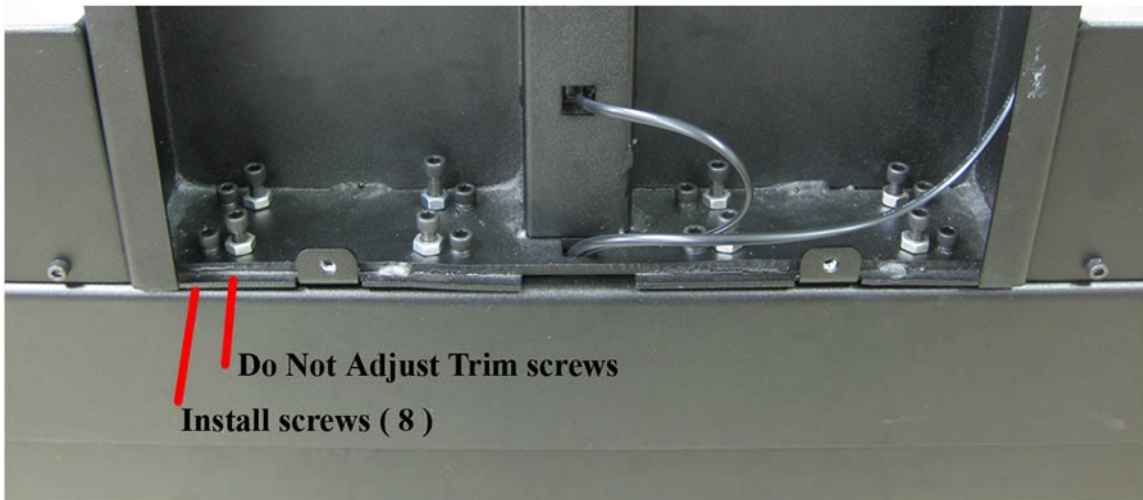


Top

Snap connector into terminal hole at lower end of vertical channel and the second cable connects to LED display circuit board at top.

Pass the 2 cables through hole at bottom of vertical housing

\*Gently tap lower area of vertical case to help align vertical holes



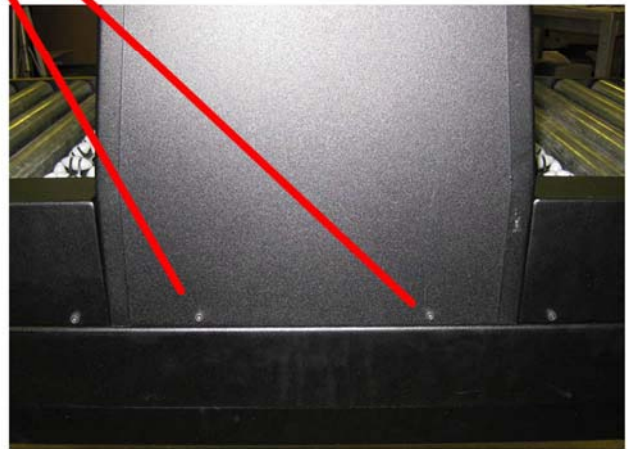
Do Not Adjust Trim screws  
Install screws ( 8 )

**7**

## Replace back panel & Install Hole caps



Slide backing panel back into position and secure with supplied screws



Install black plastic cap into each hole at all 4 corners before placing missing rollers



**8**

## Place Missing Rollers



2 front panel covers

Yellow bar

- Remove yellow bar (1 screw at each end)
- Remove the 2 front panel covers to allow access for installing the two remaining rollers. You will find 1 screw in the middle of each panel on the roller side. Each panel is held in position by non-screwing set screws.
- Insert roller with spring loaded rod end at front hole first then push the rod at the opposite back end while sliding it down until it slips into the hole on the back panel. Install the second roller the same.

# 9

## Secure cables with clamps



Cable clamps can be installed under platform to enable cables to be neatly secured



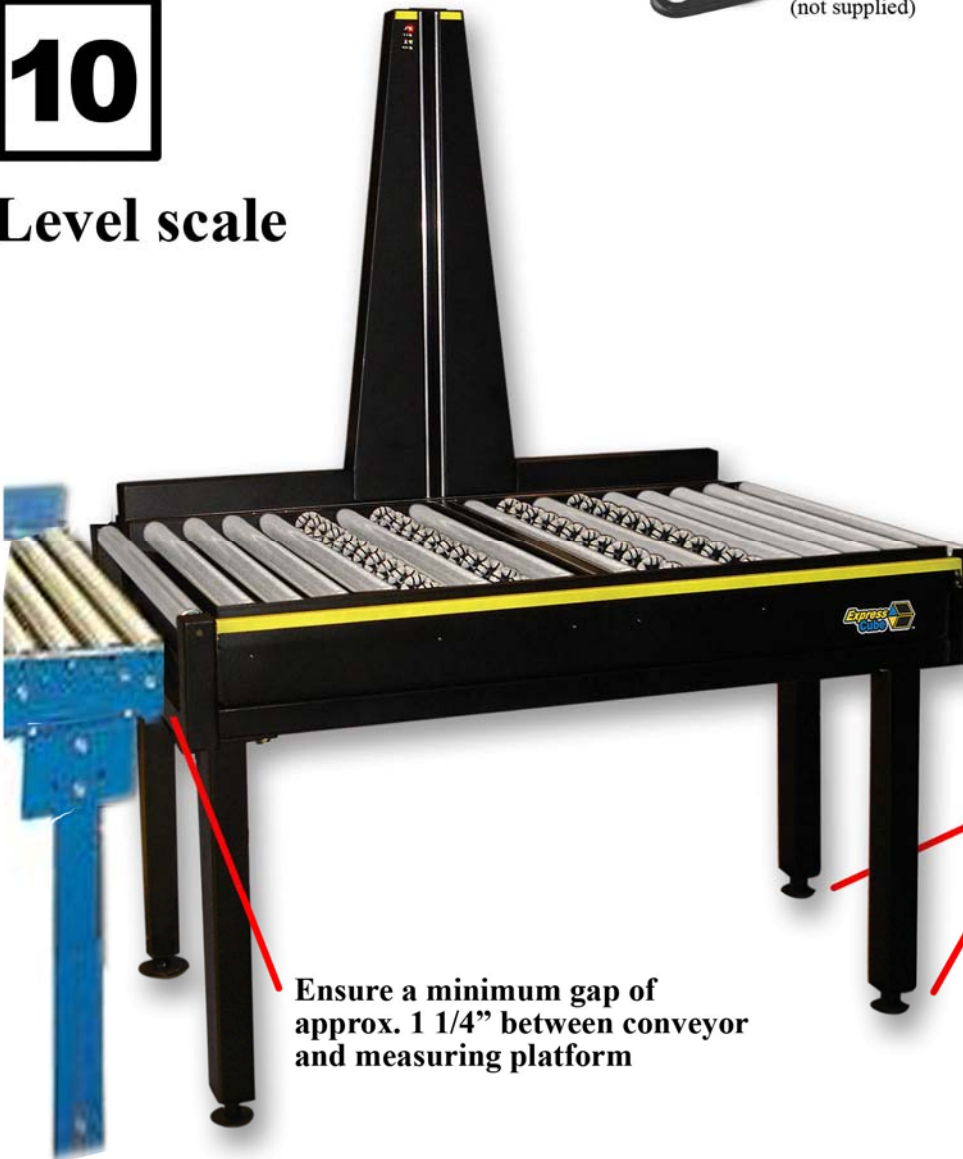
Screw holes for securing cable clamps



Cable clamps (not supplied)

# 10

## Level scale



Ensure a minimum gap of approx. 1 1/4" between conveyor and measuring platform

Feet can be unscrewed to enable height adjustment and level platform (use bubble level to observe adjustment)



**Height of leading roller (both ends) can be adjusted higher than platform rollers to prevent boxes on the line from riding onto platform aggressively**



**Roller adjustment made at bottom of each corner channel**